

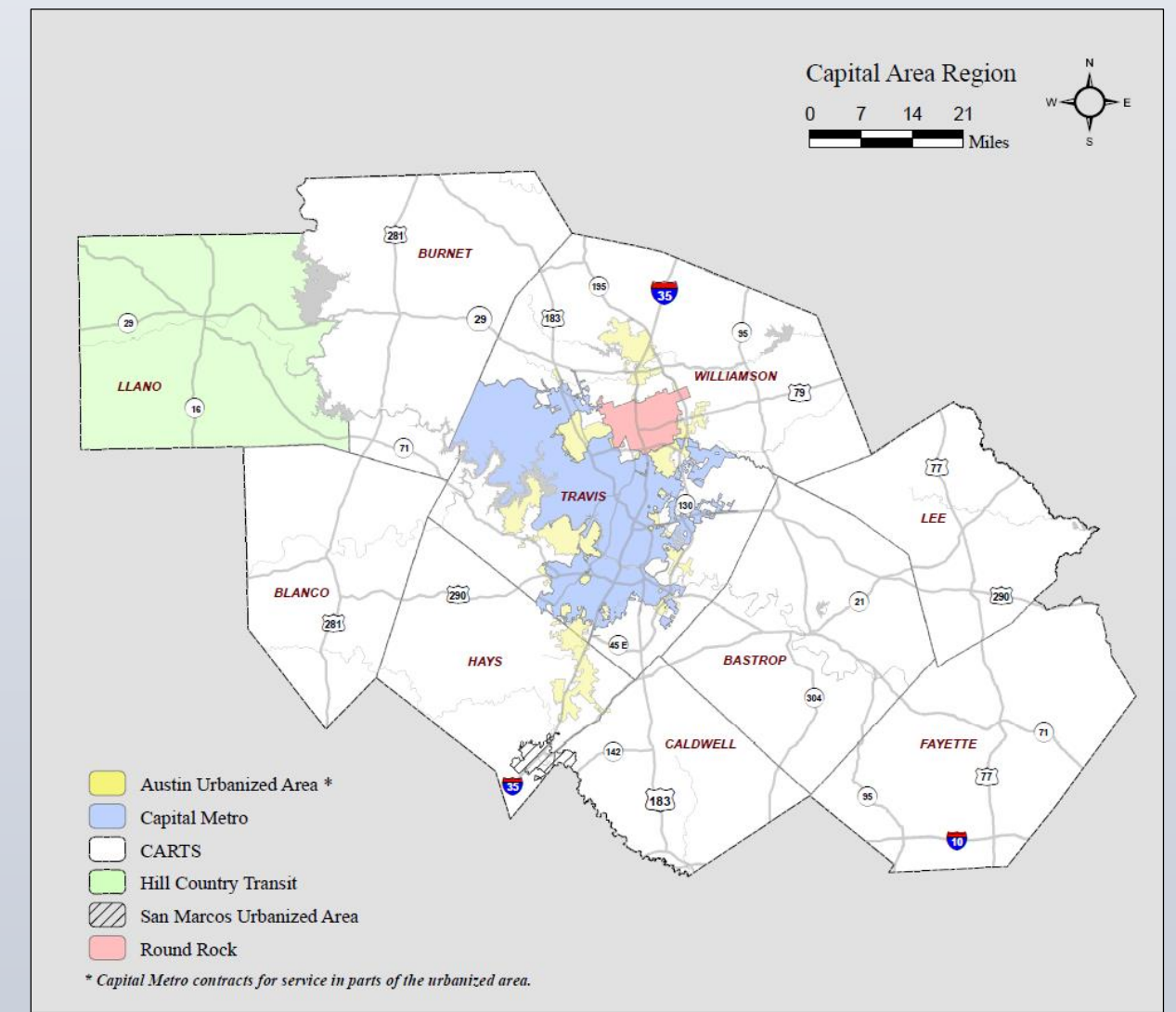


Service Expansion Policy & Transit Development Plans (TDPs)



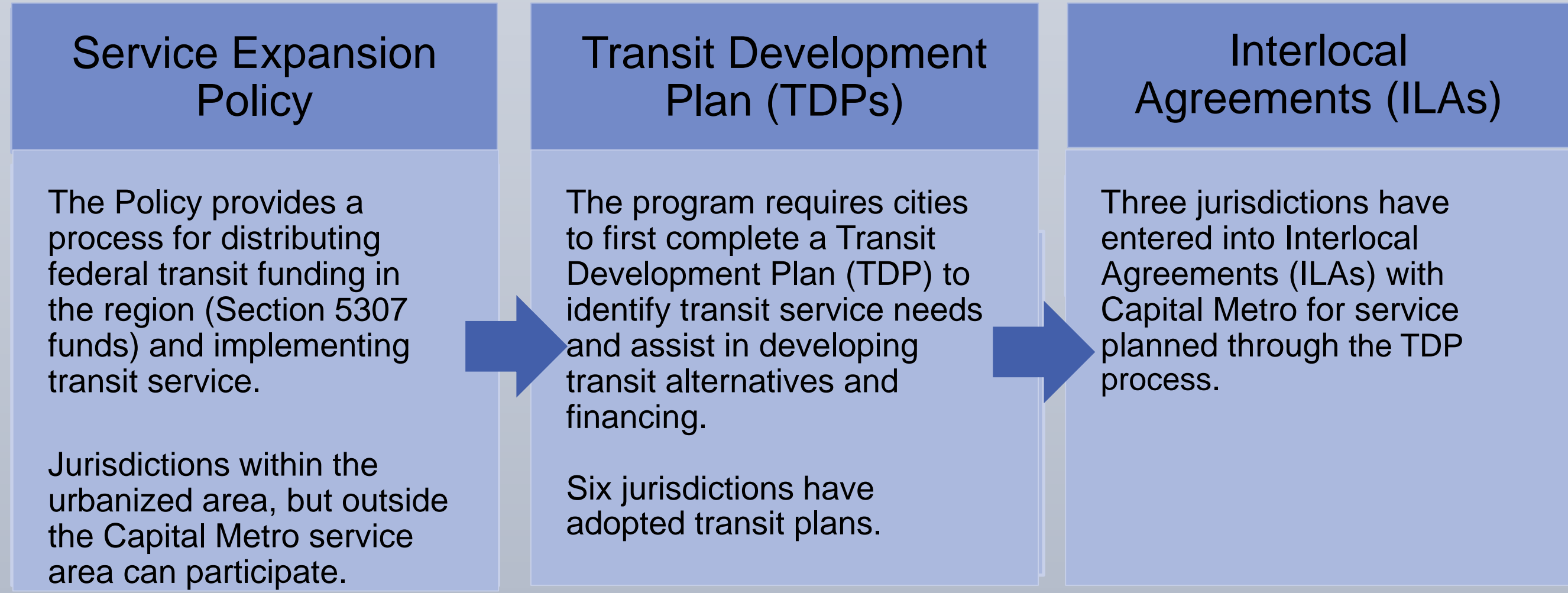
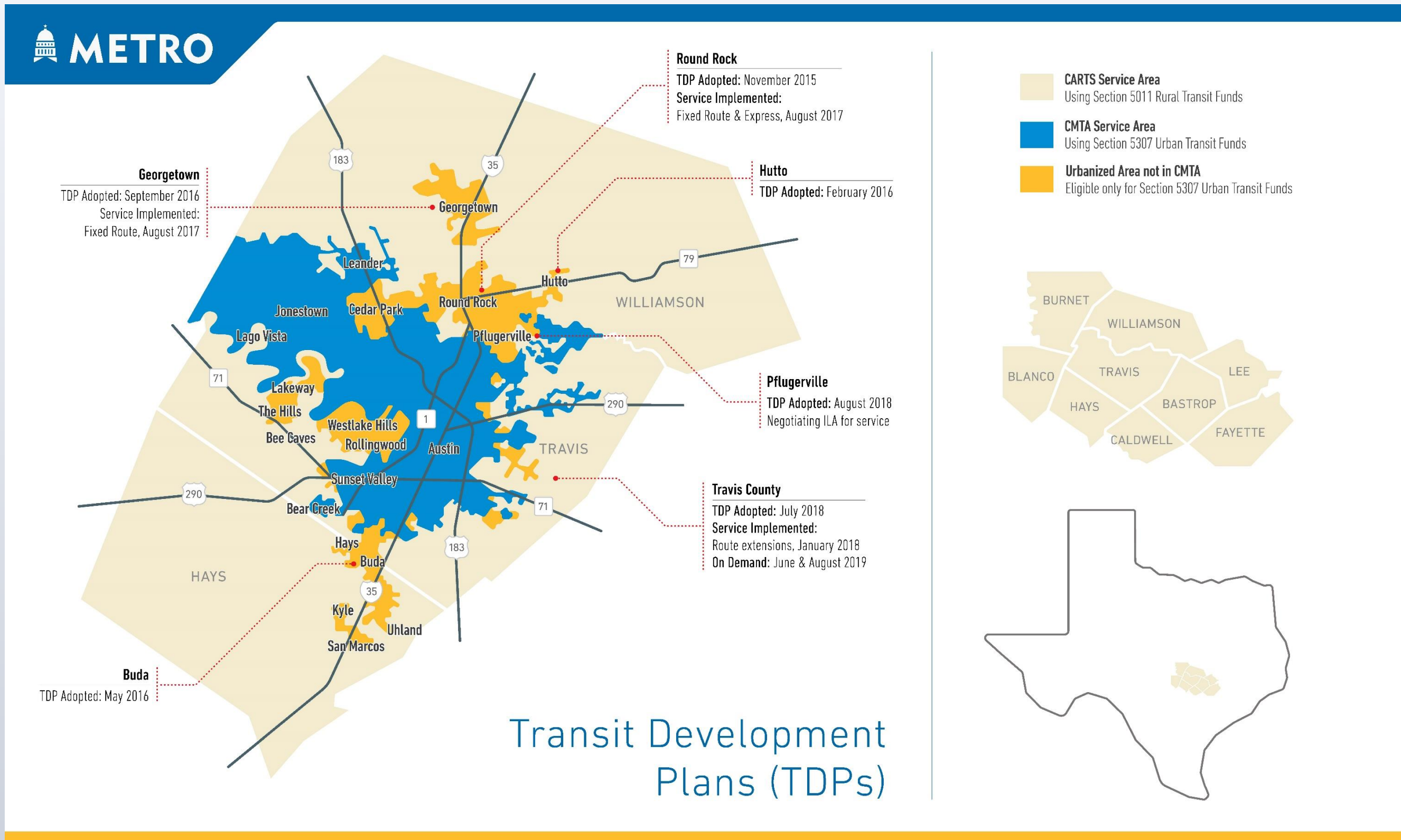
INTRODUCTION

In 2013, Capital Metro and Capital Area Rural Transportation System (CARTS) created the Office of Mobility Management (OMM), which focuses on closing gaps in service by working with local jurisdictions, coordinating with service providers and implementing new transportation tools in ten counties.



WHAT WE DO

Regional Coordination	Service Expansion Plan	Transportation Development Plans (TDPs)
Trip Planning and Regional Ride Guide	Vehicle Grant Program	Innovative Mobility



OUTREACH



OMM TDP Workshop
Feb. 20, 2019

- Surveys
- Stakeholders
- Community Events
- Public Meetings
- Social Media

LESSONS LEARNED

- Partnerships matter.
- Regional approach is key.
- Providing options encourages participation.
- Cost-sharing is important.
- Provide a detailed and fair process.
- Practice patience and flexibility.



- Deploy On-Demand projects in the region.
- Coordinate innovative project partnerships with CARTS and other partners.
- Participant in SUMC On-Ramp Program for autonomous shuttle business plan.

CONTACT INFORMATION

Michelle Meaux
Regional Coordination Manager
512-369-7785
Michelle.Meaux@capmetro.org